

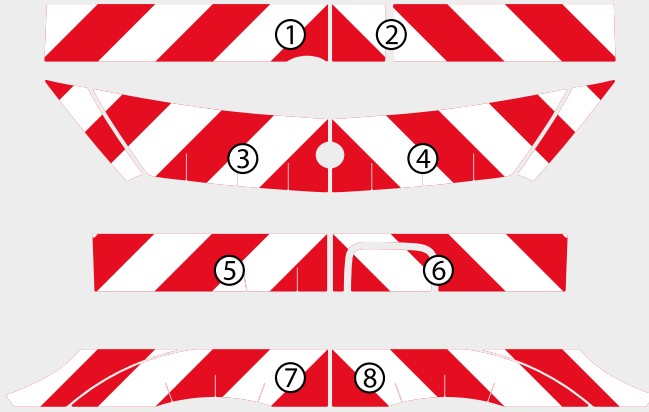
reflecto

APPLICATION INSTRUCTIONS

COMPLETE CHEVRON SET



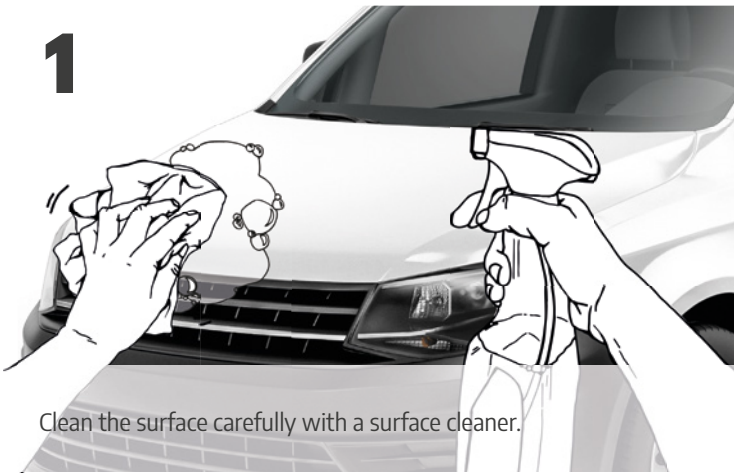
*The pictures show a generic car model only and do not necessarily depict your particular vehicle.



YOUR COMPLETE CHEVRON SET

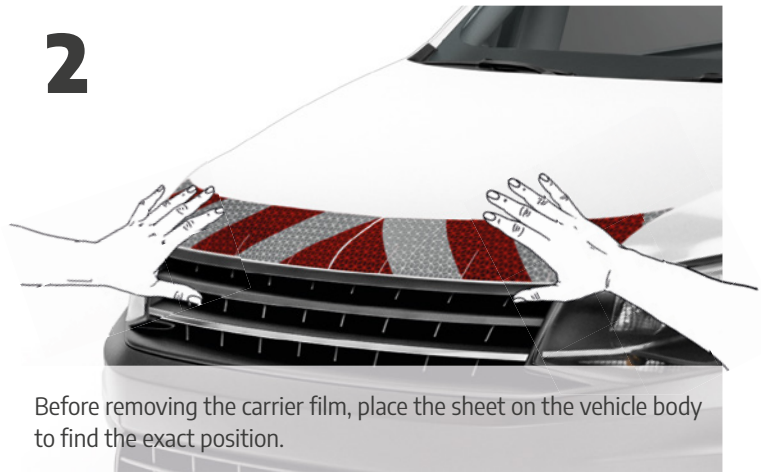
- 1 Rear marking – left side
- 2 Rear marking – right side
- 3 Front marking – left side
- 4 Front marking – right side
- 5 Side marking – passenger side, rear
- 6 Side marking – driver side, rear
- 7 Side marking – passenger side, front
- 8 Side marking – driver side, front

1



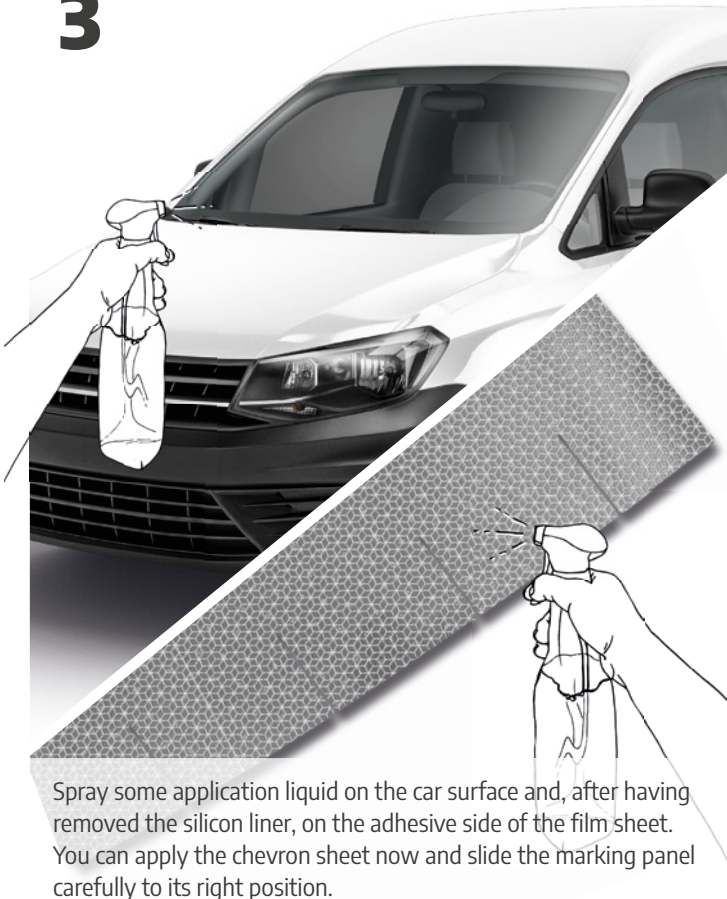
Clean the surface carefully with a surface cleaner.

2



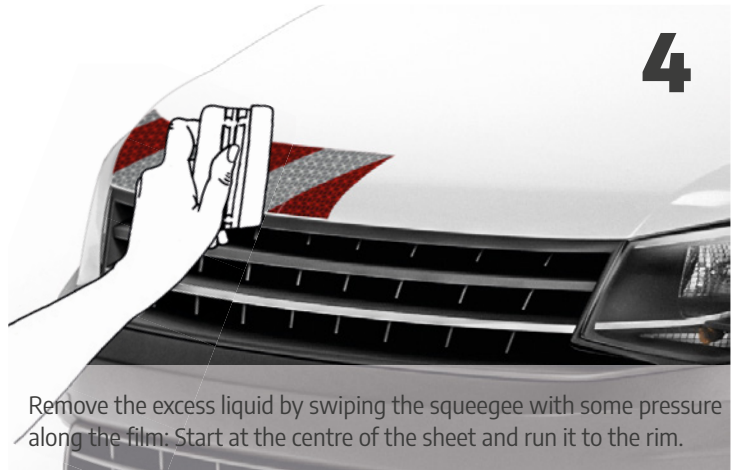
Before removing the carrier film, place the sheet on the vehicle body to find the exact position.

3



Spray some application liquid on the car surface and, after having removed the silicon liner, on the adhesive side of the film sheet. You can apply the chevron sheet now and slide the marking panel carefully to its right position.

4



Remove the excess liquid by swiping the squeegee with some pressure along the film: Start at the centre of the sheet and run it to the rim.

5



Use a microfibre cloth to remove water spills and stains around the applied marking panel, so the film edges do not get lifted or damaged.

DONE!

*The pictures show a generic car model only and do not necessarily depict your particular vehicle.