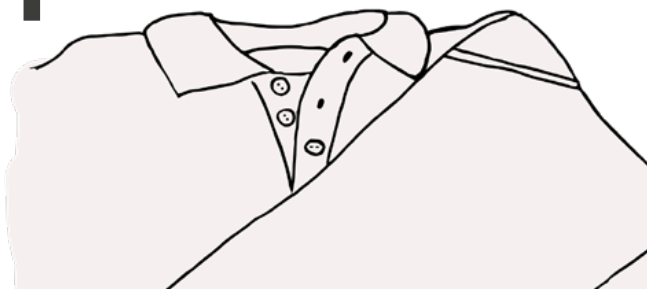


APPLICATION INSTRUCTIONS 3M™ SCOTCHLITE™ REFLECTIVE FILM 5697 SEGMENTED

LAMINATION INSTRUCTIONS:

1



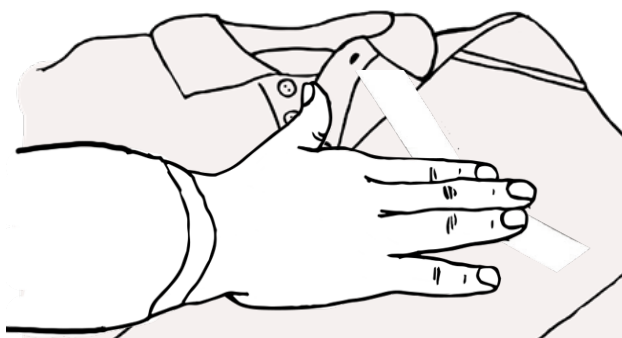
Work on a flat surface where uniform heat and pressure can be applied. Avoid applying the film over seams and stitches.

3



Set the iron to 165° C and press it for about 15 seconds evenly onto the fabric (no steam).

2



Place the reflective film on the substrate with the adhesive side down and cover the reflective side with a press cloth.

4



Note: The optimal application temperature and pressure will vary depending on substrate and equipment. Manufacturers should carry out tests to determine appropriate parameters for each and every application.

Rev.: June 2017